

Get More From Your Games!



Create your free account in-game or on uplay.com to benefit from exclusive in-game content



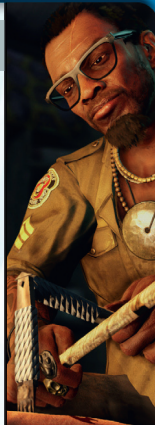
Activate your Uplay™ Passport to unlock the full ONLINE portions of FarCry®3 Co-Op & Competitive Multiplayer, as well as the ability to share the maps you've created using the FarCry®3 Map Editor with your friends and the community.

For more information, go to your Uplay™ Passport leaflet.

win

Collect Units as you play to unlock the following rewards:

- Far Cry® 3 Theme
- Tattoo Pack
- Revolving gift: Special Weapon «Cannon Revolver» for single player
- Exclusive Assignment: Exclusive single player mission «Testing Unit»



help

Stuck? Get FAQs, walkthroughs, and more in Uplay TV



share

Share content with your friends

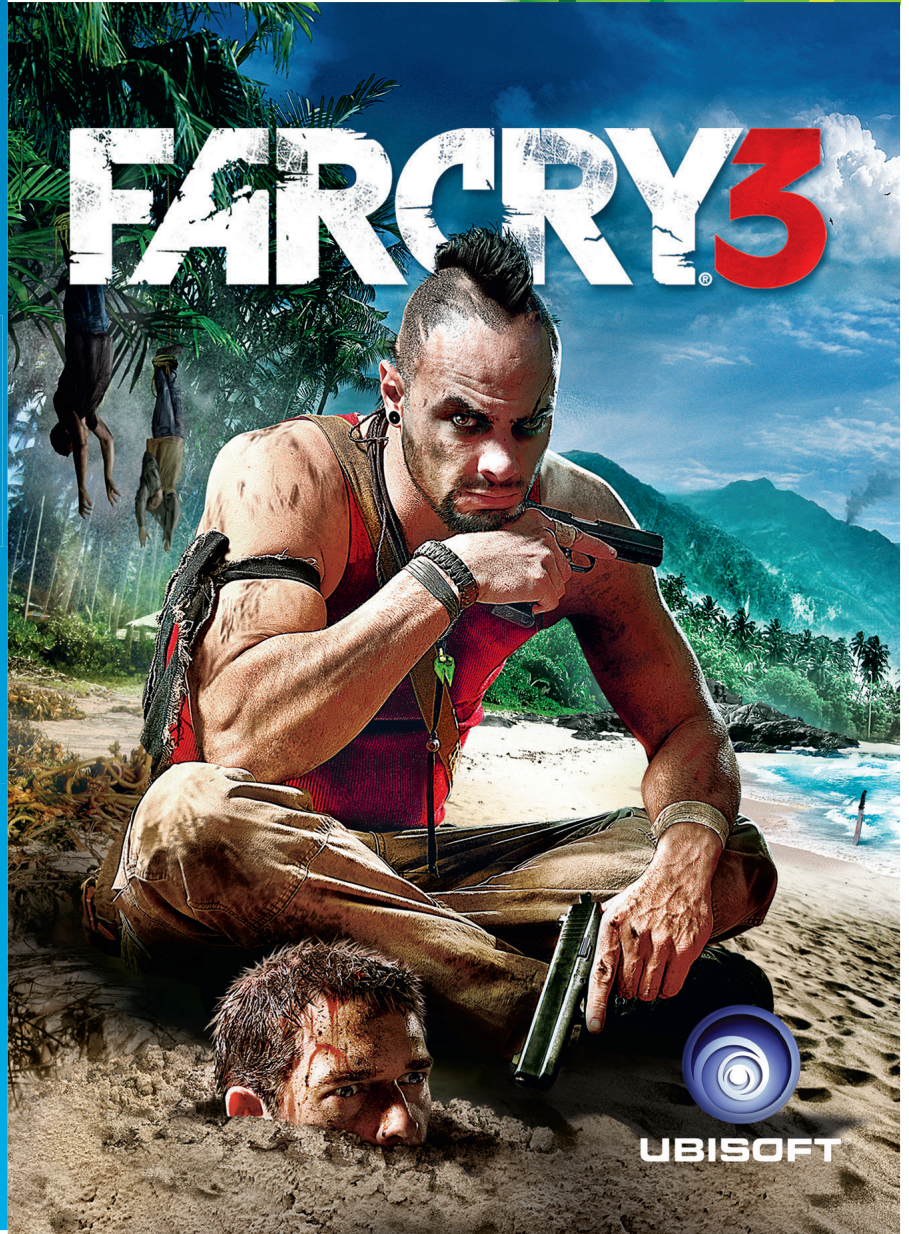


shop

Purchase additional content



FARCRY3



UBISOFT

Uplay, the Uplay logo, Ubisoft and the Ubisoft logo are trademarks of Ubisoft Entertainment. Far Cry® 3 © 2012 Ubisoft Entertainment. All Rights Reserved. Far Cry, Ubisoft and the Ubisoft logo are trademarks of Ubisoft Entertainment in the US and/or other countries. Based on Crytek's original Far Cry directed by Cevat Yerli. Some services may not be available at time of game release. HIGH SPEED INTERNET ACCESS AND A VALID UPLAY ACCOUNT ARE REQUIRED TO ACCESS ONLINE FEATURES. PLAY ONLINE OR UNLOCK EXCLUSIVE CONTENT YOU MUST BE AT LEAST 13 TO CREATE A UPLAY ACCOUNT WITHOUT PARENTAL CONSENT. UBISOFT MAY CANCEL ACCESS TO ONE OR MORE SPECIFIC ONLINE FEATURES UPON A 30-DAY PRIOR NOTICE PUBLISHED AT WWW.UPLAY.COM. For more information on the terms and conditions applicable to this game and on updates, visit www.uplay.com.

300050528



WARNING Before playing this game, read the Xbox 360® console, Xbox 360 Kinect® Sensor, and accessory manuals for important safety and health information. www.xbox.com/support.

Important Health Warning: Photosensitive Seizures

A very small percentage of people may experience a seizure when exposed to certain visual images, including flashing lights or patterns that may appear in video games. Even people with no history of seizures or epilepsy may have an undiagnosed condition that can cause "photosensitive epileptic seizures" while watching video games. Symptoms can include light-headedness, altered vision, eye or face twitching, jerking or shaking of arms or legs, disorientation, confusion, momentary loss of awareness, and loss of consciousness or convulsions that can lead to injury from falling down or striking nearby objects. **Immediately stop playing and consult a doctor if you experience any of these symptoms.**

Parents, watch for or ask children about these symptoms— children and teenagers are more likely to experience these seizures. The risk may be reduced by being farther from the screen; using a smaller screen; playing in a well-lit room, and not playing when drowsy or fatigued. If you or any relatives have a history of seizures or epilepsy, consult a doctor before playing.

ACCESSING THE IN-GAME MANUAL

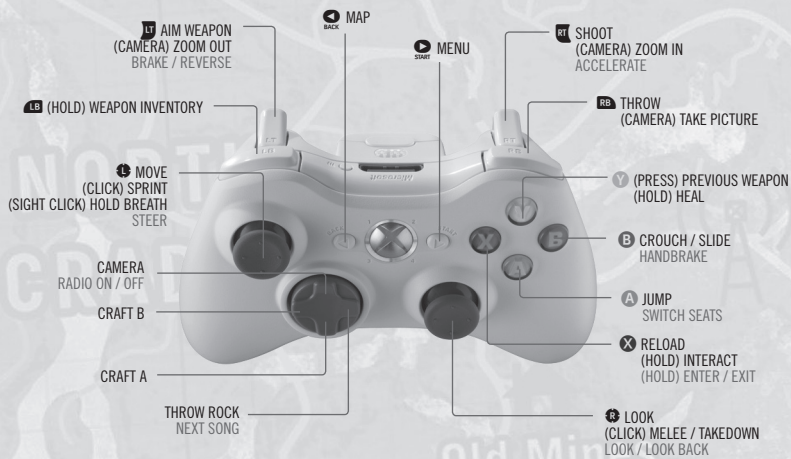
The instruction manual for this game is conveniently embedded within the game itself.

To view the in-game manual, simply access the Main Menu, go to **Options**, and select the **User Manual** option. You can also access it from the Pause Menu - go to **Handbook** and select the 5th tab labelled **User Manual**.

Not only does the in-game manual make it quick and easy to get the answers you need, but it will never get worn, torn or lost. Implementing this feature is just one step Ubisoft has taken to help save the Earth's natural resources.

CONTROLS (DEFAULT)

ON FOOT / VEHICLE



SINGLE PLAYER CONTROLS

ON FOOT

Shoot	
Aim	
Sprint	Click
Switch weapon	
Throw	
Heal	Hold
Jump	
Crouch	
Slide	(while running)
Reload	
Melee / takedown	Click
Interact with object	Hold
Look	
Move	
Open game menu	
Open map	
Use camera	
Throw rock (distraction)	
Use crafted item 1	
Use crafted item 2	
Weapon inventory / wheel	Hold

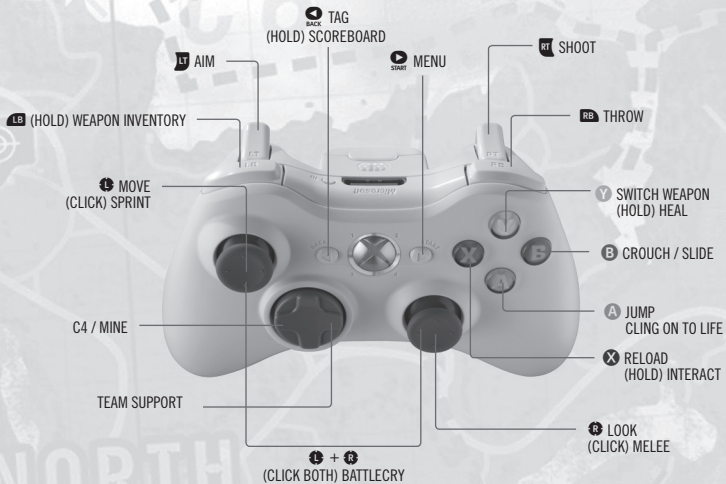
IN A VEHICLE

Enter/Exit	Hold
Accelerate	
Brake/Reverse	
Look	
Look Back	Down
Handbrake	
Switch Seats	
Radio On / Off	
Radio Next Song	

SPECIAL: CAMERA

Look	
Zoom	/
Tag enemies	Zoom in with
Take a picture	
Move	
Holster Camera	

PVP PLAYER CONTROLS



Shoot	RT
Aim	L1
Throw	RB
Switch weapon	Y
Heal	Hold Y
Crouch	B
Slide	B (while running)
Jump	A
Reload	X
Interact with object	Hold X
Look	PS
Move	L3
Open game menu	START

Tag enemy	BACK
Scoreboard	Hold BACK
Team support	right
C4 / Mine	left
Melee / takedown	Click PS
Battle Cry	Click PS + PS
Revive Teammate	Hold X
Cling onto life	X repeatedly

COOP SPECIFIC CONTROLS

Tag Wheel	Hold BACK
Booster Shot	right
Repair Tool	up

UPLAY

Earn exclusive rewards, get help when you're stuck, read the latest news and discover many other cool benefits by joining Ubisoft's Uplay community.

WARRANTY

Ubisoft guarantees to the original purchaser of this computer software product that the compact disc (CD)/cartridge supplied with this product shall not show any default during a normal use period of ninety (90) days from the invoiced date of purchase. In the first instance please return the faulty product to the point of purchase together with your valid receipt. If for any reason this is not possible, (and it is within 90 days of the purchase date), then the faulty compact discs/cartridges should be returned to Ubisoft at the below address, along with a dated receipt, location of purchase, a statement describing the fault, and all original packaging.

Address for returns:

Ubisoft, Chertsey Gate East, London Street, Chertsey, Surrey, United Kingdom, KT16 8AP

Where a CD key is required to access on-line game play, this cannot be reproduced or replaced. It is the responsibility of the original purchaser to keep this CD key secure. Lost, stolen or damaged CD keys cannot be replaced.

TECHNICAL SUPPORT

If you experience difficulties playing your Ubisoft game, please contact our 24-hour online solution centre at <http://support.ubi.com> first.

Our Support team can be reached on **0871 664 1000** (national rate) between 11am and 8pm, Monday to Friday (excluding bank holidays).

Faulty Game:

If you believe your game is faulty, please contact our support team before returning your product to the retailer.

Damaged Game:

If your game is damaged at purchase, please return to your retailer with a valid receipt for advice on replacement. If your receipt has expired and you are within the 90-day warranty period, please contact the Ubisoft support team for verification. Please note that we do not offer hints & tips at our technical support centre. These can usually be found free of charge on the Internet.

NOTES

Camp Murder

MURDER SUMMIT

NOTES

C6

**NORTH
CRADLE**

Old Mines